



BWISE

WISE

**WAREHOUSE INFORMATION
SYSTEM EXPERT**

**OVER 4 DECADES OF
EXCELLENCE IN WMS SOLUTION**



WHAT IS WISE?

WISE is the “Warehouse Intelligent System Expert”

WISE is a Web-Hosted or On-Premise Software Solution.

- Created for business, government agencies, manufacturers and distributors alike.
- Used in all warehouse processes, transforming the warehouse into a competitive advantage
- WISE engineers have created the highest level integration methodologies.

Integration methodologies

- The WISE WMS certified SAP Business One interface gives a real-time snapshot of all warehouse activities to the ERP system.
- WISE WMS runs on the popular operating systems: Windows, Linux and Android.
- WISE WMS can use the databases of Progress, Oracle and SQL server.
- WISE WMS supports simultaneous Multi-Language Environments

WISE ERP Integration

WISE has an SAP certified integration to SAP Business One.

WISE integrates with most ERP's (Oracle, NetSuite, Sage, Microsoft, Royal 4, legacy and others)

- Our integration specialists have years of ERP implementation experience
- An effective ERP interface is seamless, non-invasive, and executes transactions in real-time
- WISE can also integrate Kanban/Work Order functionality if needed
- WISE can pull stock from bulk storage locations to replenish the ERP's production work cells
- WISE interfaces to most automation and material handling solutions (carousels, conveyors, lift systems and more).





WAREHOUSE EXECUTION SYSTEM

The objective of a Warehouse Execution System

(WES) is for highly automated facilities to coordinate labor and equipment through dynamic optimization through real-time inputs.

- Maximize the benefits of automated systems while increasing inventory accuracy and reducing labor costs
- Scalable solutions: Implement the functionality needed to fully meet your business needs.
- Customizations available for customer-specific business rules and interfaces required to accommodate needs unique to your operations.

WAREHOUSE CONTROL SYSTEM (WCS)

Our Warehouse control system directs the real-time activities within warehouses and distribution centers.

Our WCS is responsible for:

- Keeping everything running smoothly.
- Determining the most efficient routing of products
- Transmitting directives to the equipment controllers.

RADIO FREQUENCY

The use of Radio Frequency Scanners is truly the backbone of all WISE warehouse transactions.

- Automatic data collection, real-time transactions capture, and flexible dynamic menus.
- This enables WISE users to utilize the WISE intelligence at incredible speeds and accuracy.
- All RF warehouse functions are performed and updated in real-time.
- The moment a task is complete, the next task in the sequence is triggered.
- WISE runs the RF on devices from commercially available brands These include; Zebra, Symbol, Motorola, Honeywell, Janam, and others.



BARCODE

- Standardized label formats used by trading partners contain detailed compliant barcodes.
- These barcode labels are used for shipping - containers - pallets - cartons - eaches.
- WISE interfaces with bar-code labeling software which have common compliance label standards.

RFID

- WISE is fully enabled to read Radio Frequency Identification (RFID) tags (active or passive)
- WISE can also use "Smart Tags", these are chips that transmit Electronic Product Codes (EPC's)
- The tag's data is transmitted automatically so there is no need to scan individual bar code labels
- The result is improved inventory accuracy, reduced labor costs, and significant operational gains
- Which all translate into increased savings and higher value.

RECEIVING

- WISE receiving consists of set-up for all inventory types that could be received into a warehouse
- Purchase orders, transfers, work orders, ASN's, RMA's, and unexpected receipts.

Based on the type of product coming into the receiving door, WISE will direct the following steps:

- Total visibility of all inbound orders.
- Complete support of ASN's.
- Simple single scan of a bar code, pallet ID, or pallet license plate.
- Single receiver can work on multiple incoming orders simultaneously.
- Multiple receiving personnel can work on a single order.

PUTAWAY

Extensive putaway functionality enables the warehouse to utilize many different styles and methods of put-away techniques. Using the RF's as the backbone of the putaway tasks, WISE directs the users to the proper location and correct equipment with the most efficient route.

- RF putaway transactions are confirmed with a scan to ensure real-time inventory accuracy
- WISE generates putaway tasks to direct warehouse users to put items away based on either:
 - The item itself
 - The product group
 - The locations, and/or any combination of the three

WISE also incorporates consolidation rules, and the product and location's dimensions (also referred to as cubing). The cubing functionality utilizes the product dimensions, weight and cube information to accurately ensure each location's viability for putaway. This will also prevent product damage by specifying item-specific, or location-specific maximum load stacking parameters.

The process of gathering parts and/or products to make a finished good is made up of multiple components. Through a process called backflushing, the material is issued automatically when production is posted against an operation.

Backflushing will use the quantity completed to calculate:

- The Bill of Material.
- Quantities of the components used.
- Will reduce on-hand balances accordingly.

QUALITY ASSURANCE

At receipt, WISE can determine the parameters in which to sample a shipment to assure significant quality control. These parameters consist of percentages of items:

- The product ID
- Group code

Vendor and/or any combination thereof. The system will then generate the tasks to move those materials that require quality assurance procedures.





RETURNS

When items or shipments are returned to the warehouse, WISE recognizes and captures the shipment's unique data.

The RF's direct the receiver to input the items' current condition and reason it was returned, and the fault of the return.

Based on the values inputted for these three variables, WISE will direct the warehouse personnel to take a specific user refined action.

For Example:

- Put items back in general stock (use as is)
- Put items in staging for future delivery
- Take to re-work for repair
- Send back to manufacturer
- Scrap

CROSS DOCKING

The ability to cross dock is a valuable tool to increase warehouse efficiencies and speed order processing. When an item is received into available inventory and the same item is required for an outbound order waiting processing, WISE triggers the immediate tasks necessary to take the goods from the receiving dock to the packing station or shipping door to complete the shipment. This eliminates all putaway and picking tasks that would be necessary to store the item and then pull again.



INVENTORY CONTROL

Inventory is tracked from the moment it is received at the dock door including every step of the warehousing process until it is directed out the shipping door. All tasks are system generated dynamically directing warehouse personnel via the radio frequency backbone. This enables warehouse management to run the distribution center using real-time inventory status and quantities.

Inventory is controlled at the:

- Item level.
- By SKU number.
- By quantity.
- By location.



REPLENISHMENT/FORWARD PICK

WISE supports pick and pack operations that require replenishment activities. It maintains inventory levels in forward pick locations and controls the movement of items from reserve or bulk storage locations to the higher volume forward pick locations. Warehouse employees are directed to complete replenishments based on location or item minimums and maximums. If there is not enough inventory available to fulfill the day's orders, WISE will automatically generate the pick tasks from the bulk locations to adequately supply.

PRODUCT LOCATION

Dynamic space management is another key feature of WISE.

WISE utilizes the item's and location's "cubes" which is a term used to calculate volume and denote the capacity of an item or location. Once the layout of the distribution center has been set up and the attributes of products and locations are defined, the system will manage the space according to:

- Availability
- Volume
- Weight
- Attributes required
- On-hand
- Allocated
- Available
- Potential

MULTIPLE UNITS OF MEASUREMENT

The unit of measure describes how the quantity of an item is tracked in the inventory system. The most common unit of measure is "eaches", which simply means that each individual item is considered one unit. An item that uses "cases" as the unit of measure would be tracked by the number of cases rather than by the actual piece quantity. WISE gives the user the ability to view all inventory in multiple units of measure simultaneously. Other examples of UOM include:

- Pallets
- Pounds/Ounces
- Linear feet/Square feet/Cubic fee
- Gallons
- Thousands
- Hundreds
- Pairs
- Dozens

PHYSICAL CYCLE COUNT

Upon implementation and before commissioning of the system, a warehouse-wide physical inventory is taken to enter every item of the system per its precise location. A scan of the location followed by scans of the items ensure the item-location match. After implementation, WISE dynamic Intelligent Cycle Counting Functionality will handle all future counts.

The WISE cycle counts do not require an inventory freeze. The counts are automatically triggered in the background per user-defined requirements. A discrepancy cycle count is triggered whenever there is a putaway or pick task completed and there is a difference in the actual quantities and the expected quantities. That location is then put on a temporary hold and a count is triggered.

Cycle counts can be conducted per:

- Location
- Zone
- Product group
- Item ID

OUTBOUND FUNCTIONALITY

WISE PICKING

WISE picking supports:

- Single order, FIFO/LIFO, Mixed containers
- Bulk, zone, multiple pickers per zone, pick-and-pass, slotting and pick by hard or soft allocation
- Pick from general storage, take the goods to the predetermined packing stations for packing
- Pick from general storage locations and put the items directly into the packing container





- Pick directly to a carton using WISE cartonization which calculates the item's cube based on entered weight and dimensions.

WISE SHIPPING

Orders can be consolidated by:

- Order number
- Container
- Carrier
- Wave
- Zip code
- State

LOAD MANAGEMENT

The shipments' delivery order sequence can be automatically picked and staged for loading based upon delivery route. The pickers will be directed to "pick-to-nose" in order to ensure that the last delivery is loaded first.

OUTBOUND DOCUMENTATION

Including but not limited to:

- Invoices
- Packing lists
- Bank document
- Shippers export doc
- Dock receipt
- NAFTA certs
- Shippers letter of instruction
- Domestic bills of lading
- Haz-Mat

CARRIER INTEGRATION

The manifest can be sent to UPS, Federal Express etc. To ensure accurate billing and tracking of all shipments. This tracking information is stored in WISE for automatic email notifications.

WISE also links to many of the mainstream shipping systems like:

- Haz-Mat
- ConnectShip
- InfoShip
- Neopost
- Ship Station
- ADSI and others

CORE FEATURES & ADD ONS

E-WISE

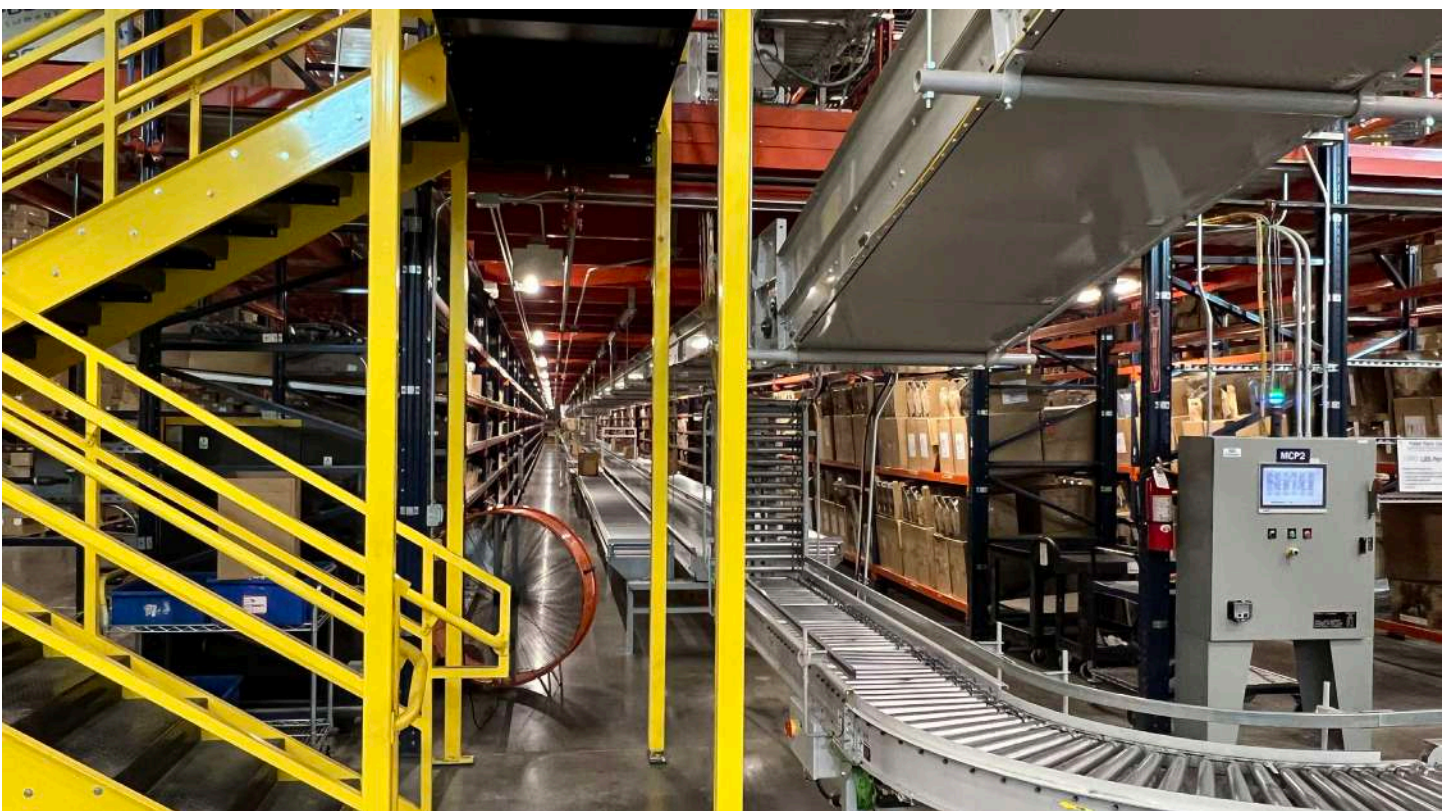
The eWISE web browser from BWISE gives your company a web portal that allows customers and other users to:

- Access real-time Information within your organization
- View and create orders
- View stock statuses
- Print reports
- Track shipments
- Create and save custom views for ease of reporting

E-COMMERCE SUITE

WISE eSuite integrates your Inbound Order Fulfillment from eCommerce platforms such as:

- Magento
- Shopify
- Amazon and others
- Print reports
- WISE eSuite operates in a desktop or Cloud environment (SaaS)



WISE DASHBOARD

WISE allows for many different dashboard configurations which allows customers and other users to access real-time information within your own display and save custom views for your own purposes.

WISE Mobile

WISE Mobile leverages the latest in Cell technology to significantly improve efficiencies in warehouses that do not have RF capabilities.

WISE WMS mobile is completely independent with the software residing on the handhelds. You can upload to the main system anytime you have cell coverage.

Yard Management System (YMS)

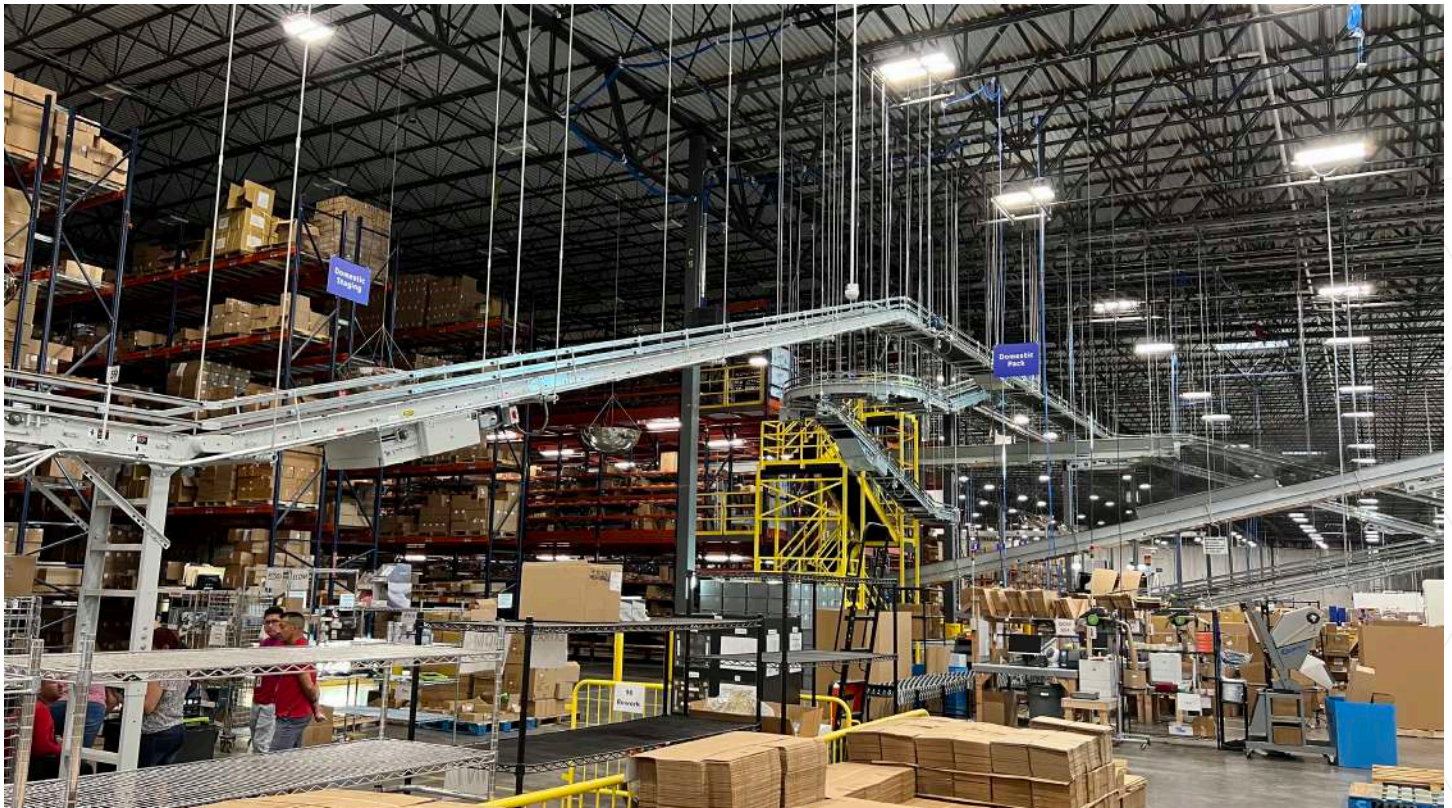
The Yard Management System module is a natural extension of the WISE warehouse management solution. Yard management is the function of managing the inventory of trailers or empty trailers parked outside the warehouse, as well as scheduling and managing carrier and driver appointments. Yard Management is generally associated with cross docking operations and includes the management of both inbound and outbound.

- Appointment scheduling and management
- Trailer check-in & check-out
- Trailer movements
- Yard inventory report
- Email alerts
- Free APP for Windows and Android to give to drivers
- Many more features

WISE Multi-tenant Enterprise - STANDARD

WISE also offers an additional module, which can easily tie together multiple distribution centers' inventory information. With federated WISE, a multi-site corporation can have a "one-stop" place to view and drill down into every warehouse location governed by a WISE installation.

This global view of information enables management to make proper informed decisions about movement of product. This feature includes:





- Centralized Multi-Warehouse view
- Global Virtual Warehousing
- Consolidated Inventory Views
- Web Browser Based Views
- Centralized Databases
- Virtual Multi-Warehouse
- Extensive Web Reporting
- Automatic Emailed Reports

WISE VOICE

WISE Voice directs your associates working both hands-free and eyes-free through their mobile workflows to minimize steps and maximize efficiencies.

Built to guide mobile workers throughout facilities, WISE Voice gets them to where they need to be, when they need to be there. WISE Voice Pick-Up-and-Go, speech recognition capabilities allow new associates to start work immediately, significantly reducing new operator onboarding time.

Our voice recognition software adapts to workers individual speech preferences, minimizing the need for repeating spoken interactions, which saves time and makes work more engaging.

UNIVERSAL ADAPTER Integration Tool

Our Universal Adapter and our Wise Cloud Integration service [EDI, ERP and eCommerce] provides a Reliable and Real Time Integration platform to "Partner Supply chain systems" across any vertical. Features include:

- Flexible table-driven architecture accommodates a range of trading partners and documents
- Modular architecture provides Web-based access to a library of new trading partner maps

Without interface you can connect with:

- Third Party Clients
- Third Party Warehouse
- Domestic and Overseas Clients
- Custom Brokers

WISEship® Multi-Carrier Shipping Integration

Our WISEship® Integration connects WISE WMS with most mainstream shipping Solutions such as Pitney Bowes, Neopost, Clippership, ConnectShip, eCommerce solutions & others. WISEship® also connects directly to your carrier supplied systems like FedEx and UPS.

WISEship® can receive your orders picked from the warehouse or collected from your website. Where rate shopping is needed WISEship® provides the lowest rate and time-in-transit for each shipment. WISEship® then updates WISE in real-time as orders are shipped.

The system can also send out email notifications of shipped orders to your customers and clients. WISEship® can take the orders from WISE and calculate weight, rate-shop and process all necessary documentation as per your customer's instructions or best shipping method.

When connected to a rating engine WISEship® provides the lowest rate and time-in-transit for each shipment by rate shopping each carrier. WISEship® then updates WISE in real-time as orders are shipped. WISEship® produces compliant label generation including required carrier tracking numbers and electronic manifesting for most carriers.

WISE3PL

WISE 3-PL, Royal 4 System's collaborative distribution and supply chain execution solution, delivers total coordination of receiving, production, quality, maintenance, warehousing, shipping and third party billing operations as they occur. WISE 3-PL supports your lean distribution initiatives by spotlighting non-value and value-add activities while standardizing your operating processes.

Order demand is fulfilled directly from warehouses, distribution outlets, or production without the delays associated with batch and frequently outdated planning cycles. It is a comprehensive enterprise solution that promotes full collaboration between your employees, customers, suppliers and business partners.

Top Features and benefits include:

- Order consolidation and sequencing
- Paperless transactions eliminate paperwork costs while maximizing quality
- Cross docking reduces inventories and eliminates redundant picking and put-away
- Real-time web inventory visibility maximizes fill rates and minimizes inventory control costs
- WISE 3-PL efficiently links all your operations promoting efficient use of capital by synchronizing people, equipment and inventory for maximum utilization, productivity and output.

