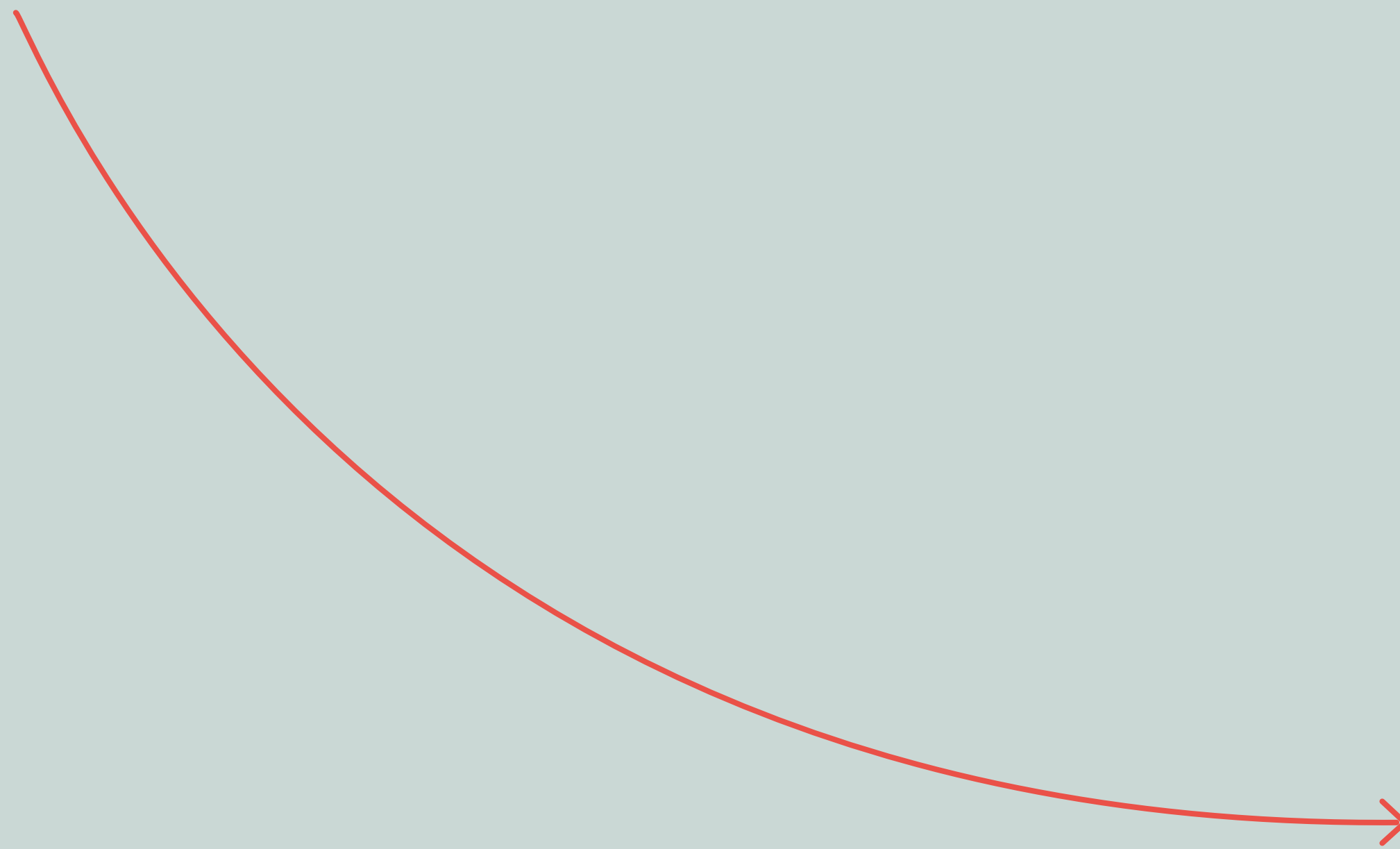


**Vitacore improves
on-time order
fulfillment by**



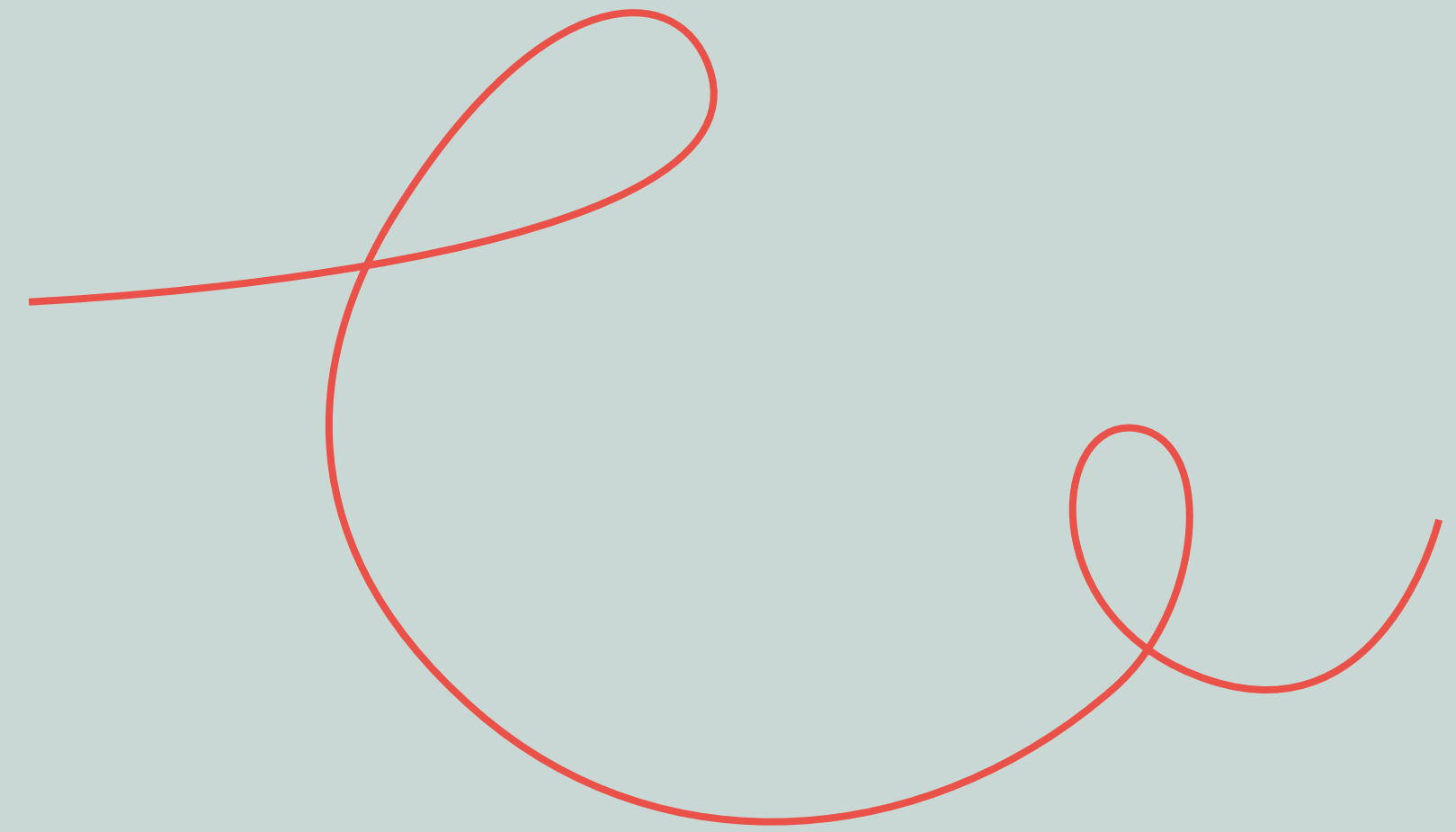
katana

70%



With the help of **Katana**, Vitacore Industries improves **on-time order fulfillment, inventory management,** and **production planning** to locally manufacture personal protective equipment for North America's front-line workers.

katana



Mikhail Moore, CEO at Vitacore Industries



“Katana provides us with all the necessary features for manufacturing order management. Furthermore, we can track inventory usage and incorporate our sales order tacking into Katana.”

katana

- * Vitacore Industries switched from spreadsheets to Katana to improve **production planning** and **scheduling**, optimizing their workflows for a **40%** increase in productivity.
- * Katana gives Vitacore Industries the **visibility** they need to improve material inventory management by **80%**.
- * With Katana, Vitacore Industries can track batches, materials, and products to meet industry requirements and get **total traceability**.

About Vitacore Industries

To support the return to the normalcy of everyday life, Vitacore Industries manufactures masks, respirators, and other personal protective equipment (PPE) for front-line workers. Vitacore is a joint venture comprised of Canadian doctors, scientists, engineers, and business leaders, and their goal is to manufacture for the common good of North Americans.

Vitacore is the first Canadian manufacturer authorized by Health Canada. By manufacturing in Burnaby, BC using locally sourced materials, Vitacore Industries provides personal protective equipment of uncompromising quality at a fair price, creates local jobs, maintains a responsive and steady supply, and acts sustainably for Canada's environment.

COMPANY



WEBSITE

[vitacore.ca](https://www.vitacore.ca)

LOCATION

Canada

EMPLOYEES

80+

INDUSTRY

Health and safety equipment

The challenge they faced

Vitacore's mission is to take care of the front-line worker safety during the global pandemic, who take the first and biggest hits in crisis situations. Giving front-line workers the means to defend and protect themselves against these risks is Vitacore's top priority.

To help them focus on providing **reliability** and **safety** for their customers, Vitacore needed more control over the back-end of their manufacturing. The main areas they set out to improve were:

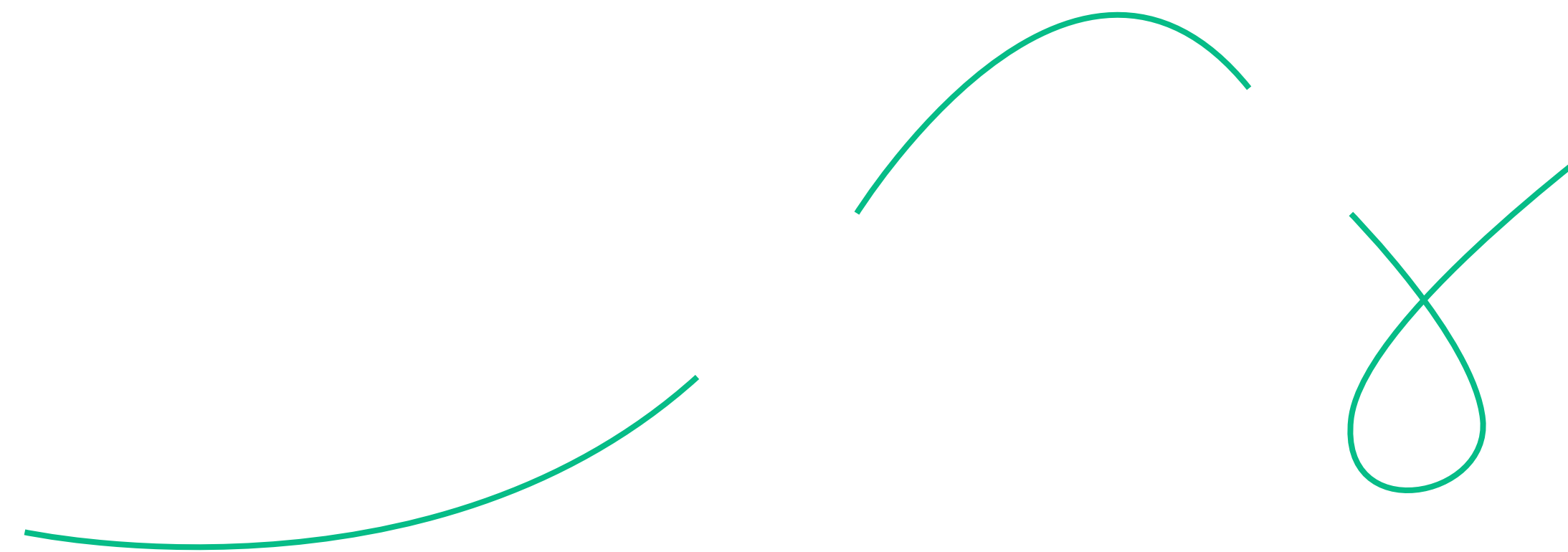


The solution they found

Vitacore relied on spreadsheets to help them manage their manufacturing operations. But **spreadsheets** are difficult to maintain and require a lot of **manual data entry** that can ultimately lead to costly mistakes. They decided to find manufacturing software that would give them the overview they needed without the risks that come with spreadsheets.

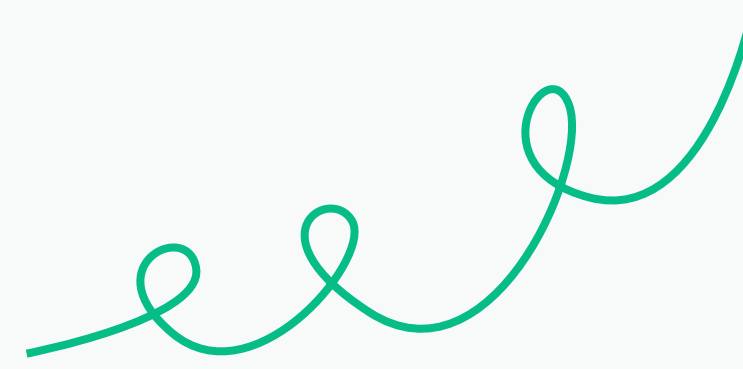
Katana was the first manufacturing software solution they found, and after trying it out, they left their spreadsheets in the past. According to Mikhail Moore, CEO at Vitacore Industries, Katana was the solution they needed to get their inventory and sales in sync.

katana



How Katana helped Vitacore boost **visibility** and **productivity**

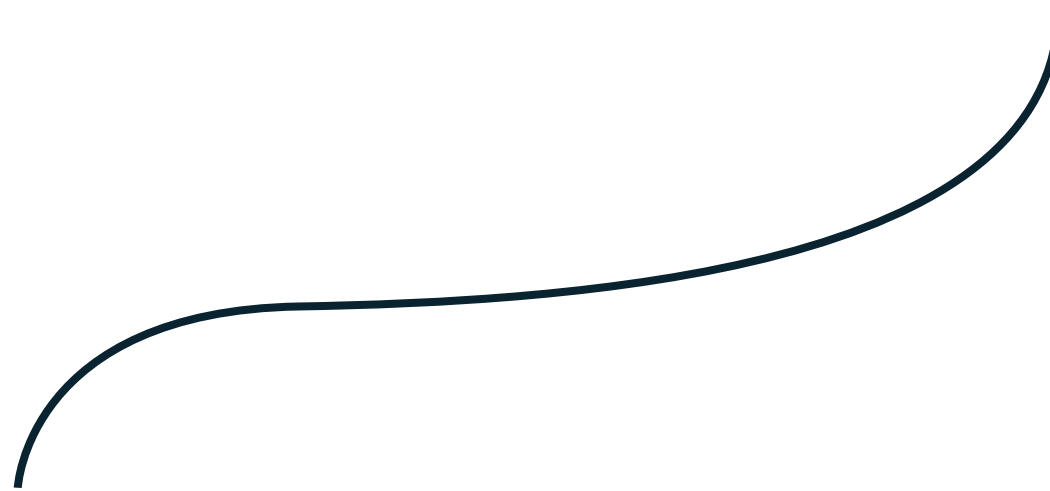
For Vitacore Industries, orders are constantly rolling in.



To keep up with demand, they needed a tool that would give them a **live overview** of sales and production. With around 70 people working on their shop floor, effective production planning is essential. And as a safety product provider, Vitacore Industries can also **track batches** with Katana for total traceability, a critical industry requirement.



Vitacore in numbers



With the help of Katana
their team was able to:

Improve material inventory management by **80%**

Optimize production planning and scheduling by **40%**

Increase on-time order fulfillment by more than **70%**

Reduce time spent on day-to-day operations by **40%**

katana

Katana's master planning features give manufacturers like Vitacore Industries total visibility, **calculating** required materials and inventory **in real-time**. Katana highlights when stock is running low, ensuring their team always has the materials they need to fulfill orders available.

katana

A decorative yellow line graphic consisting of several overlapping loops and curves, starting from the bottom left and extending towards the right side of the page.

Everything you need to keep manufacturing

Manufacturing ERP software built to give you visibility and control over all the moving parts of your business. Inventory, sales, and beyond.

Start a free 14-day trial*

*No credit card required

	Quantity	Stock	Materials	Production	Delivery
1 Console table legs	1	×	×		
# 1 Dining table legs	6	✓	✓	✓	🕒
# 2 Coffee table legs	10	🕒	✓	✓	🕒
# 3 Office desk legs	5	🕒	✓	✓	
# 4 Dining table top	7	🕒	×	✓	

