

# Improving Labor Costs with Real-Time Data and Fewer Missed Punches

Small-town grocer finds big improvements with UKG Dimensions

Carlie C's IGA has deep affection for its community and customers, beginning with its first grocery store in Johnston County, North Carolina, in the early 1960s. Its focus on serving the needs of the community and providing excellent customer service has enabled the organization to grow over the years to 25 locations in the state. Carlie C's IGA offers a full range of services, including curbside pickup and delivery, and invests in creating a flexible and engaging workplace for employees.

As a longtime user of a Kronos workforce management solution with its 1,500 employees, Carlie C's IGA was interested in how the latest technology could provide additional features and functionality to further enhance management of its workforce. Interested in increasing efficiency and employee engagement, the grocery store chain migrated to the UKG Dimensions™ suite from UKG that interfaces with existing HR and payroll solutions.

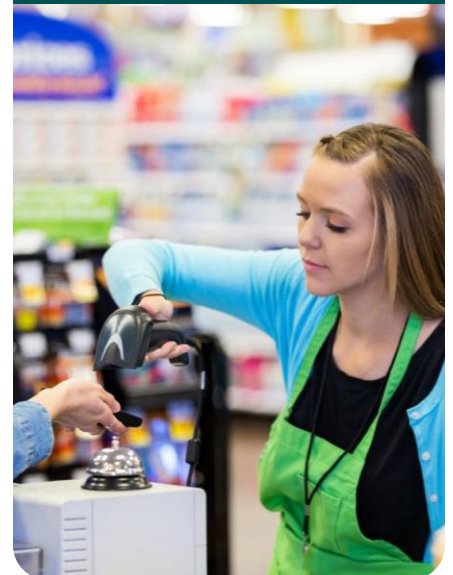
## Streamlined scheduling process

Store managers use the solution to create schedules for front-end associates, while produce, deli, and meat department managers use it to schedule their own staff. Corporate and district managers can easily see schedules across all stores. With a shift copy-and-paste feature and schedule templates, patterns, and transfers, the scheduling process is fast.

Many of the stores are located in the same areas, enabling stores to share associates, who can swap shifts or pick up extra shifts at a nearby store. When managers approve shift swaps in the solution, the schedule automatically updates. The solution also automatically charges the correct location for extra shifts that associates take at other stores.

60% - 80%  
FEWER MISSED  
PUNCHES

as weekly  
averages  
dropped from  
125 to 80, and  
to 25 some  
weeks



## Improving Labor Costs with Real-Time Data and Fewer Missed Punches

### Manager and payroll time savings

Correcting associates' missed punches previously was a time-consuming task for managers, as they needed to get on a store computer to make corrections. Now they receive notifications on their smartphones if employees forget to punch out, and they can go directly to an employee's timecard to correct a missed punch.

Missed punches have decreased from 125 on average to 80 and sometimes 25 each week. Managers previously needed until 10 a.m. on payroll days to fix missed punches. Now this is done by 8 a.m., enabling payroll staff to begin their work two hours earlier.

"It's just saved a lot of time and money with the many things in the system that we can do," says Hannah Boren, labor analyst.

### Providing crisis pay

This ease of use has been valuable during the coronavirus pandemic when Carlie C's wanted to increase pay for associates on the frontlines serving customers. "It was the easiest thing to just go into the system and create a crisis pay code that automatically assigns it to each person, so they get paid an extra \$1.50 every hour they work," explains Boren. Associates have enjoyed this extra appreciation of their work.

### Improving compliance

As Carlie C's puts a new break policy into place to eliminate previous issues — and costs — related to associates not taking lunch breaks, the new solution will enable the grocery store chain to consistently apply break rules across all stores to help ensure compliance.

### Enhanced engagement with mobile

New mobile functionality with geofencing lets associates clock in and out anywhere inside a store on their smartphones, alleviating lines at the timeclock at the beginning and end of shifts. Associates also can use the solution's self-service tools on their mobile devices to view their schedules, timecards, and accrual balances and to swap shifts and request time off. Managers can easily approve shift swaps and time-off requests on their mobile devices from anywhere.

### Improved reporting and labor cost control

Extensive reporting has given managers more tools to efficiently manage their stores and better control labor costs. Data views provide real-time information on hours and wages by department and location.

"It helps with day-to-day business because you can see that you've already used this many hours and you've been allotted only this many hours, so you need to cut some hours," says Boren. "I also can pull hours by location and compare that to sales and quickly see our wages for the week in each location."

She adds that she can get the information that managers want much faster. "Having real-time access to data is one of the biggest benefits of UKG Dimensions. It's right there at your fingertips and it's live. You don't need to wait until the end of the day."

**"Having real-time access to data is one of the biggest benefits of UKG Dimensions. It's right there at your fingertips and it's live. You don't need to wait until the end of the day." Hannah Boren, Labor Analyst**